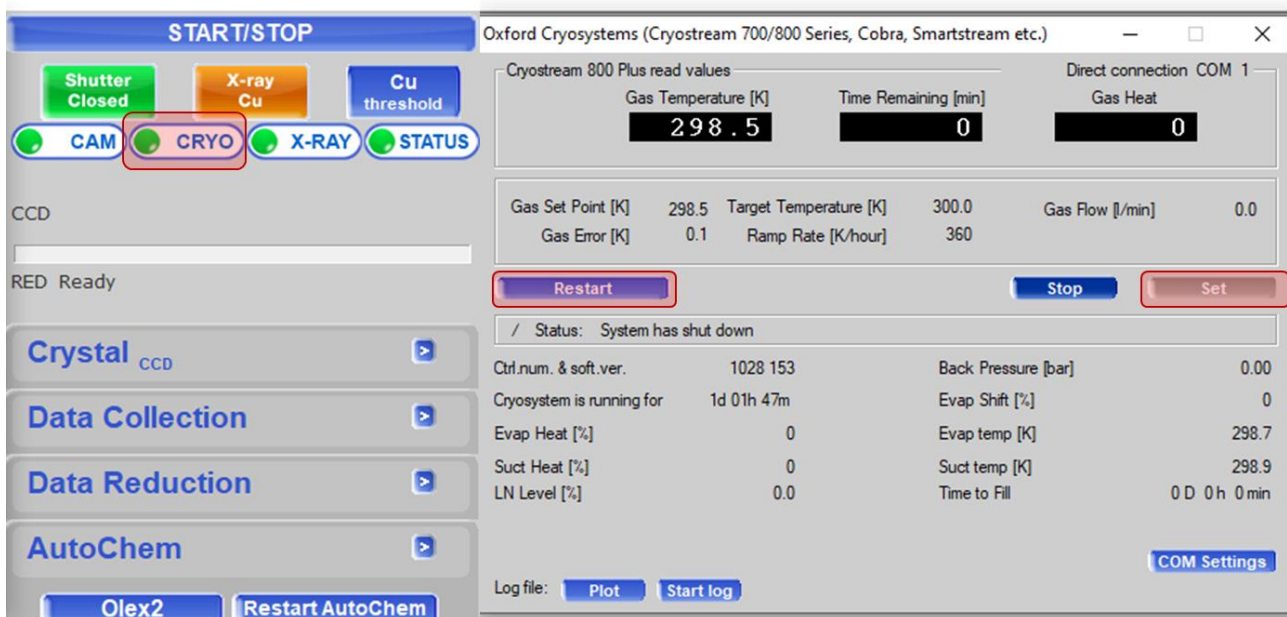
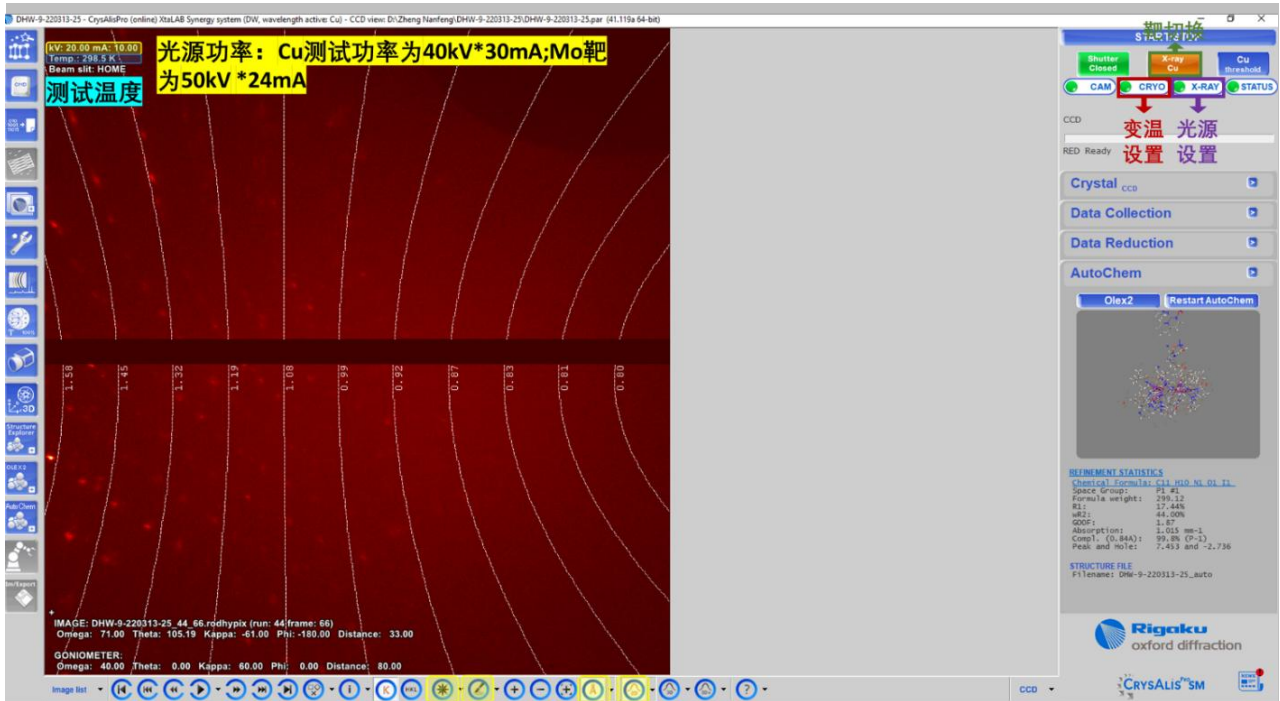


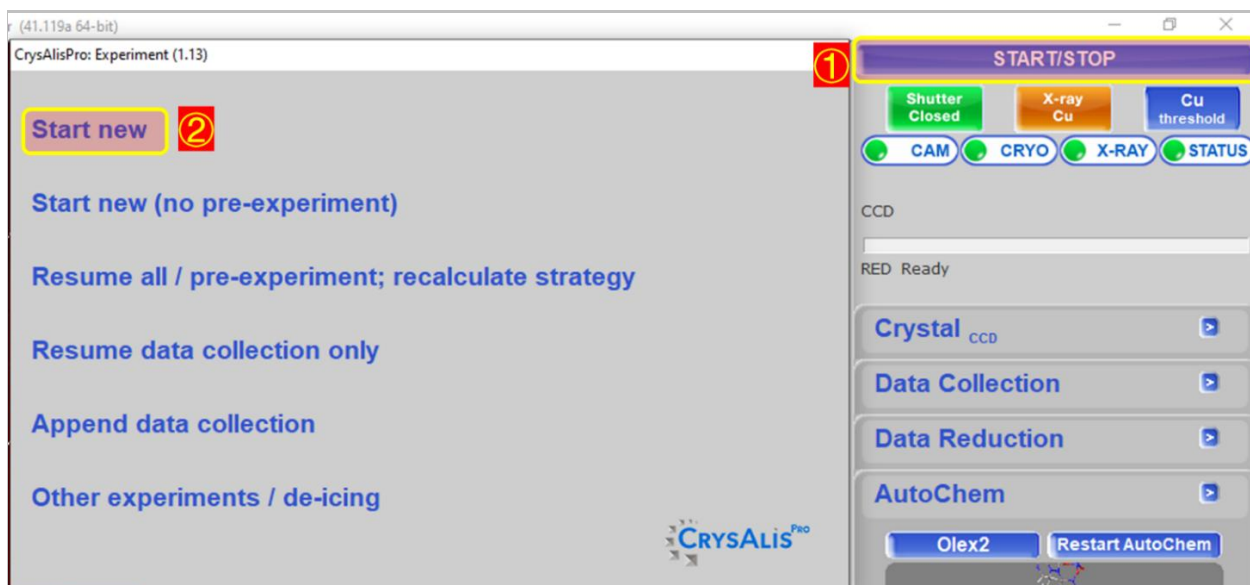
转靶微焦斑单晶衍射仪简易操作规程

一、设备状态检查确认：靶电压电流、温度状态等

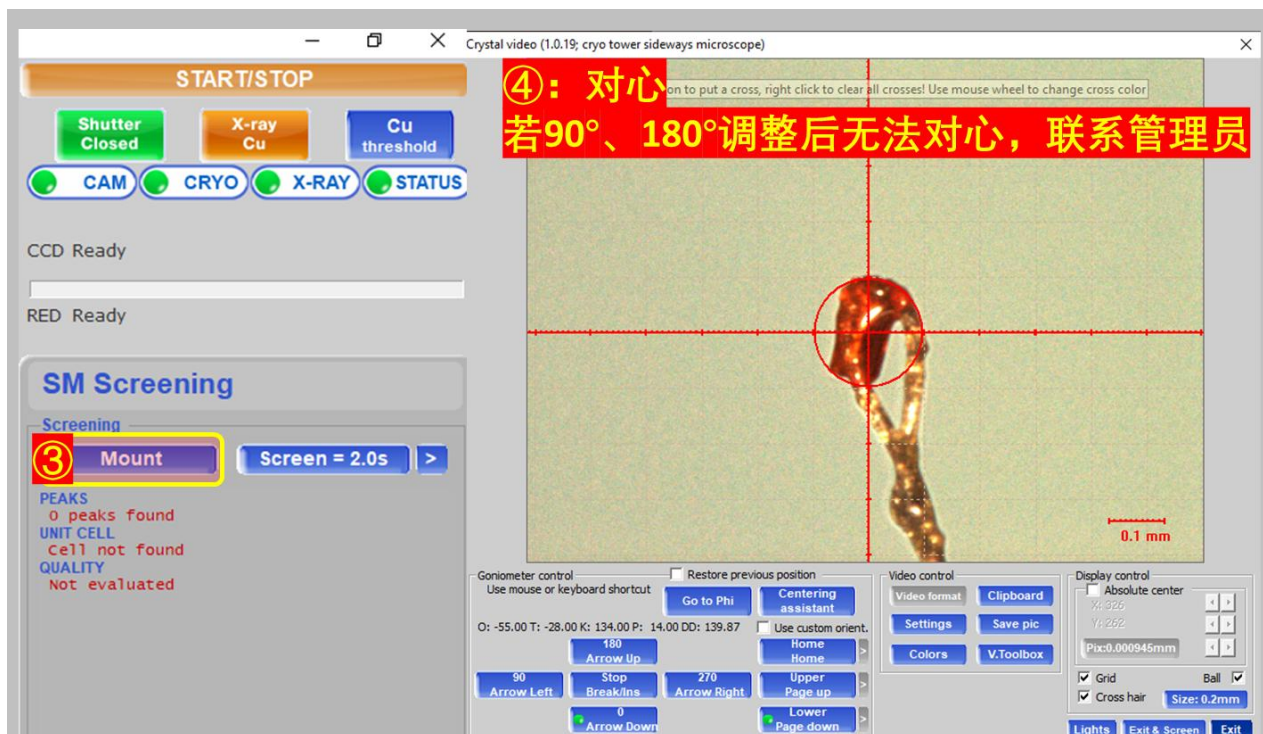


二、测试设置

1. 开始新实验:



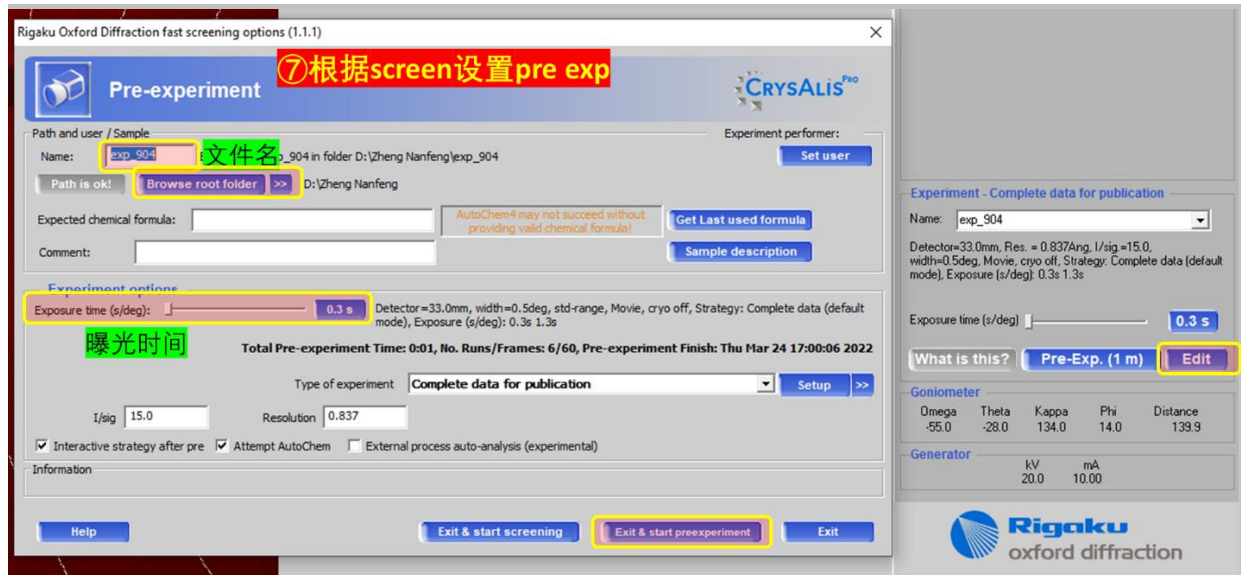
2. 挑选高质量晶体，对心;



3. 快扫 (也可以拍单张照片): 获取预实验拟采用参数;



4、预实验：为采集完整晶体数据获取策略条件



5、数据收集：根据预实验设置数据收集策略条件

⑧根据预实验情况设置空间群和曝光时间等参数



Unit cell for Strategy Calculation (CSQ):
Cell: 12.0221(14) 16.6089(18)

P lattice 6.04% (800 of 833 reflections)

Lattice Wizard

Strategy parameters

Resolution Theta 2Theta 0.837

Laue group Point group Other mmm

Friedel mates are equivalent (uncheck for high quality absolute configuration data)

Detector Distance 30.80

Advanced

Time prediction based on data to 0.837 Ang

Fill time
 Fill I/sigma

The same time for all theta positions
 Different time for each theta positions

[-49.78; 49.78]

[-99.00; 101.53]

Predicted resolution beyond 0.84

Scan width: 0.50

Resolution	Maximal I/sigma	Maximal I/sigma
0.05	15.13	30.46
exp time	individual I/sigma:	merged I/sigma:
0.05	23.98	36.58
0.08	14.80	26.79
Total I/sigma:	17.49	35.21

Strategy mode Use run list sorting with scan inversion

Complete data (default mode)

limit 100.0 IUCr limit Max 100.0 %

Generates runs that reach completeness limit

Automatic experiment settings

Mode: 16bit no dead-time

Frequency: 100.0Hz

Options (CHOS)

Autochem/Movie/Cryo/Red

Current Strategy

No. runs/frames: 16/1124

Total experiment time: 0h 04m

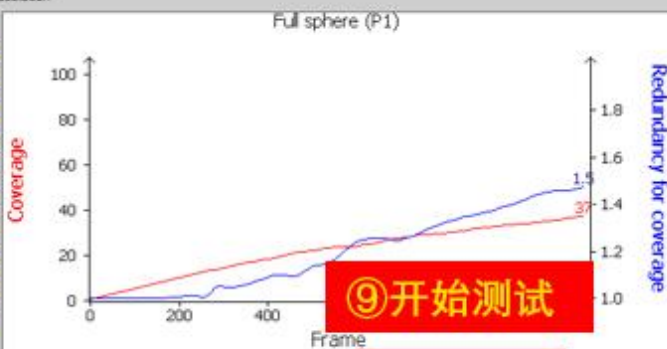
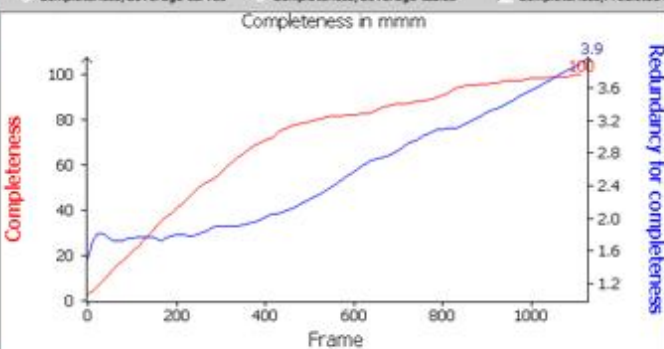
Expected experiment finish time: Mon Aug 12 14:47:09 2024

Calculate New Strategy

Manually Edit Run List

Update Completeness

Completeness/Coverage curves Completeness/Coverage tables Completeness/Predicted resolution



⑨开始测试

Help Start named experiment Start experiment Cancel